

KNITTING INSTRUCTION

Pattern **Ann-Mari Nilsson** Photo **Thomas Harrysson**

Knit a pair of mittens with
the pattern “Halland” from Sweden



Hemslöjden



-  Knit stitch, colour 1
-  Purl stitch, colour 1
-  Knit stitch, colour 2
-  Purl stitch, colour 2

Pattern repeat

Diagram 1

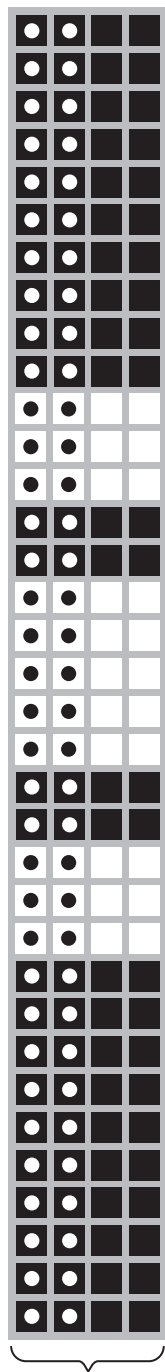
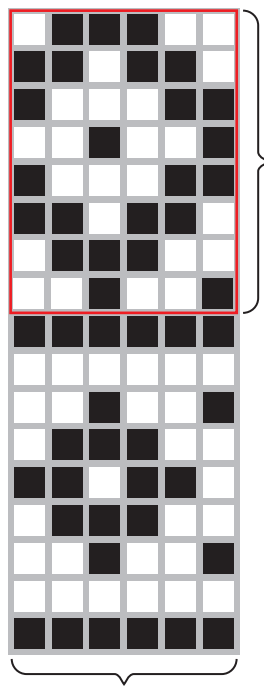


Diagram 2



YOU NEED

60 g wool yarn 6/2, 300 m/100 g,
in two different colours
Double pointed needles 2 and 2,5 mm

GAUGE AND SIZE

29 stitches in pattern
with needle 2,5 mm = 10 cm
The mitten is 9,5 cm wide
and 27 cm long

PATTERN

If you knit the pattern according to the diagrams to the left the colourway will be like the blue swatch below. If colour 1 and colour 2 changes places in diagram 2 the pattern will look like the mittens on the front page.



RIGHT MITTEN The size of the mitten is "adult woman". Increase or decrease the size if needed.

CAST ON 60 stitches on needles 2 mm. Work in the round in K2, P2 ribbing. Work according to diagram 1 to create a striped cuff or continue till the piece measures 8 cm. Change to needles 2.5 mm and knit pattern according to diagram 2. The colourway will be as the blue swatch to the left. Repeat the pattern within the brackets for 6 cm. In the beginning of the third needle, knit 11 stitches loosely with a yarn in a different colour. This is where the thumb will be. Move the 11 stitches back to the needle in your left hand and continue to knit till the pattern measures 17 cm.

DECREASING Continue to work in the round and "slip, slip, knit" in the beginning of the first and the third needle and knit two stitches together in the end of second and fourth needle. When there are 12 stitches remaining, pull the yarn through and fasten well.

THUMB Pick up 24 stitches around the hole for the thumb, then pull the thread away. Knit pattern and decrease in the same way as before when the thumb measures 6 cm.

LEFT MITTEN is knitted as the first one, but the thumb is placed on the last 11 stitches on the second needle.